

28-Jan-26
Niigata seiki Co., Ltd

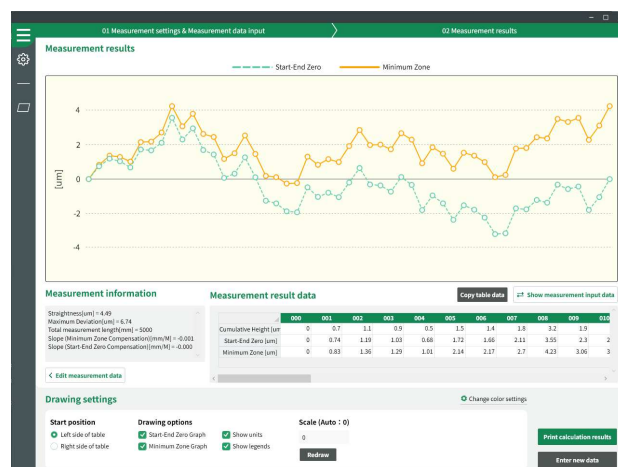
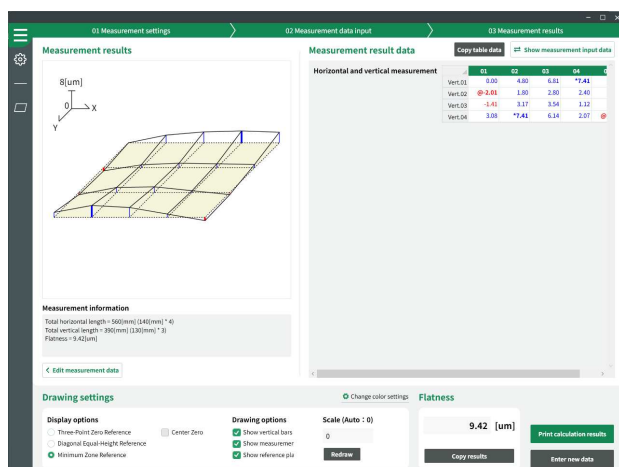
Release of a measurement support software with graphing functions that eliminates complex calculations

Surface Plate & Machine Accuracy Measurement Software “LEVELAB”

Now available

Niigata Seiki Co., Ltd. (Head Office: Sanjo City, Niigata Prefecture; President: Toshiyuki Igarashi), a manufacturer of precision measuring instruments, is pleased to announce the release of **LEVELAB**, a newly developed software designed for surface plate calibration and machine accuracy measurement.

LEVELAB is software that measures, calculates, and visually displays flatness and straightness. It is a renewed version of Niigata Seiki’s measurement software, which has been widely adopted at manufacturing sites, offering significantly improved usability and visibility.



Visual Display of Flatness and Straightness Based on Measured Data

Product Overview

LEVELAB is software for calculating and graphing flatness and straightness for precision measurements of surface plates, machine tools, and other equipment.

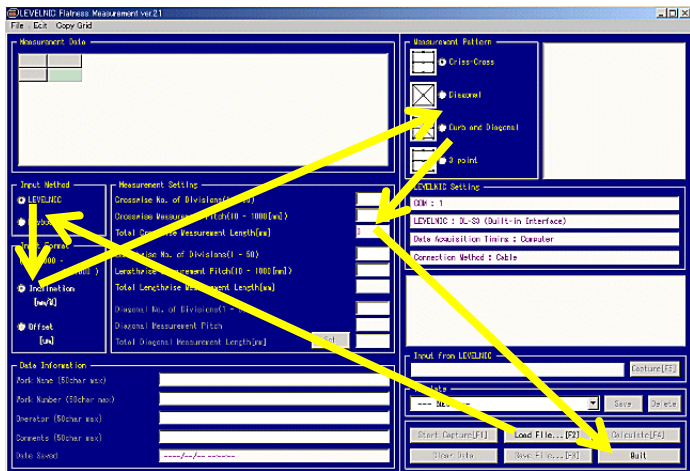
Measurement data can be entered manually via keyboard or imported directly from the optional high-precision digital level **“Levelnic Series.”** Both wired and wireless connections are supported, enabling real-time data acquisition, automatic calculation, and graphical visualization, thereby streamlining the entire measurement process.

Development Background

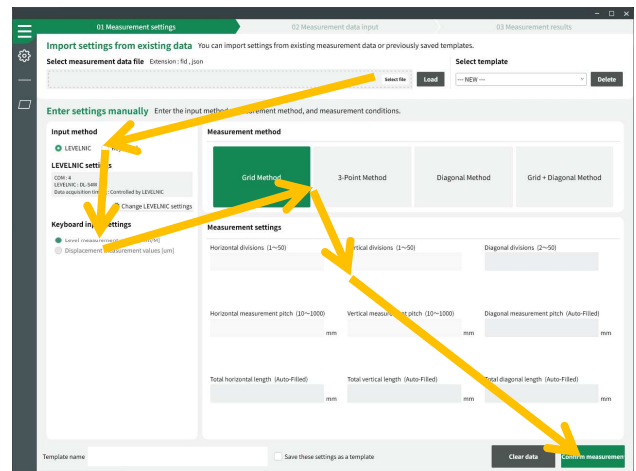
LEVELAB was developed in response to requests from inspection and calibration sites seeking higher accuracy and greater efficiency in post-processing inspection and surface plate calibration.

While conventional software often suffered from complicated operation and limited visibility, LEVELAB resolves these issues at once, significantly improving operational efficiency in the field.

【 New UI Designed to Match Natural Eye Movement 】



Conventional Software



New Software: LEVELAB

■ Key Features

◎ JIS-compliant flatness and straightness measurement

Enables high-accuracy measurements in accordance with JIS standards with greater ease.

◎ Automatic calculation and graph display during measurement

Measurement data is automatically calculated and visualized, allowing intuitive understanding of surface plate geometry.

◎ Compatible with “LEVELNIC” digital levels

Supports both wired and wireless connections for direct data input.

◎ Flexible data input regardless of level type

Manual keyboard input is supported, allowing the use of bubble-type spirit levels as well.

◎ Automatic update function

Ensures the software is always kept up to date for safe and reliable use.

◎ Designed for future expansion

Additional measurement functions are planned for future updates (license-based).

■ Target Users

- ◎ Machine tool manufacturers
- ◎ Quality control departments in grinding and manufacturing industries
- ◎ On-site personnel engaged in surface plate calibration and post-process inspection

■ Main Specifications

- Supported OS: Windows 10 (32-bit/ 64-bit), Windows 11 (excluding ARM versions)
- Supported Languages: Japanese, English and Chinese

- License Authentication: USB dongle
- Update Method: Automatic updates via internet connection, or manual download from our official website

■ Release Date

25-Dec-25

■ Surface Plate & Machine Accuracy Measurement Software LEVELAB Download Page

https://www.niigataseiki.net/en/soft_download/software_levelab/

For inquiries regarding this product, click here.

<https://www.niigataseiki.net/en/support/>